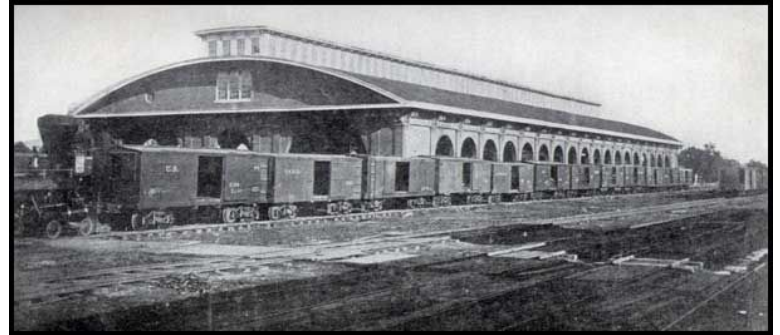


Multi-age Summer Camp

Session III, Atlanta's Beltline & The Trail of Trains



Welcome to Session III of summer camp: Beltline Camp! Our educators are Ms. Natalie Rosbottom who joins the team with Ms. Cameron Farmer (GP Swans Educators).



Declaration of Intent:

Inspired by our recent study tour in Reggio Emilia Italy, we will focus on exploring the ways in which our core value of community intersects with the children's connections to places and each other this summer at GPCP. Our intent reflects the continued commitment to the wellbeing of our community. We will foster experiences that embrace interconnected values and concepts such as curiosity, respect, empathy, process and growth, relationships, and research.

Following the trail of trains, we will explore and investigate the history of the Atlanta Beltline while also discovering and interpreting its newest artistic evolution. Through a process of interpreting old photos and current sights we will weave together theories, mixing facts, reality and imagination to inspire new stories, and encourage children's research in pursuit of possibilities supported by the languages of painting, photography, mapping, music and storytelling.

Parent Involvement: Although Parent Helper days are not required during summer camp, parents are required to provide snacks. **Snack assignments will be available a week before each session and can be found on the Preschool Camp page of the website.** Please plan to provide a healthy, nutritious snack for the entire class on your assigned days.

If you have any questions about this please contact Natalie or Cameron. Please consider signing up for at least one parent helper day. The participation of parents enriches the quality of the work and your presence is missed by children and educators during summer! A signup calendar will be posted!

What to Bring: Each child should have a **labeled water cup or bottled water** packed for their camp each day. Also, make sure your child has **two sets of extra clothes and underwear** if needed on site and wears **comfortable shoes** (also labeled). If your child is in pull-ups, please provide pull-ups and wipes for them each week. We will be field-tripping to sections of the Atlanta Beltline, the Ecosystem Farm on Mondays, another CSA pick-up on Wednesdays. Please remember to **sign field trip forms and leave a car seat when necessary!**

Please apply sunscreen and bug spray to your child before coming to school, and we will re-apply halfway through the full day with school purchased sunscreen and bug spray.

Thank you and we look forward to a fun session with your child!
Natalie Rosbottom & Cameron Farmer

Swan's Educators- natalie.rosbottom@gpcp.org & cameron.farmer@gpcp.org